

AOHUA

CBI

Compound Band Imaging

Bronchoscope Series



+86-21-6768 1018

Aohua Endoscopy CO.,LTD.
Location: No. 660 Shengang Road, Songjiang District, Shanghai, 201612, P.R.China
Postcode : 201612
Fax: +86-21-6768 1019
Email: marketing@aohua.com

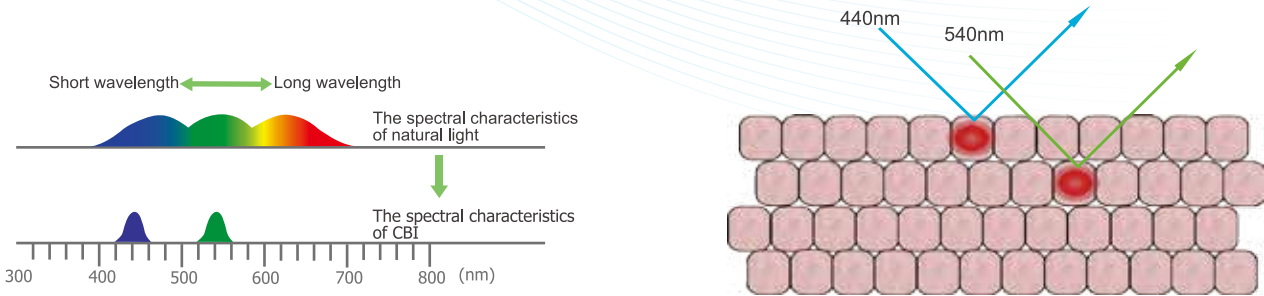
www.aohua.com



2017.03

CE 0197
ISO 9001/ ISO 13485 Certified

CBI(Compound Band Imaging)



The light source device can output 440nm and 540nm wavelength light through a special filter. This composite wavelength conforms with the spectral characteristics of hemoglobin absorption.

440nm wavelength light is easy to be absorbed by fibrous tissue of mucous layer, and the 540nm wavelength light plays a role in submucosa blood vessels. So in CBI mode, the mucosa lesions can be identified and the submucous vascular distribution can be highlighted as well.

AQ-100 Imaging Processor

| | | |
|-------------------------------------|---|---------------------------|
| Observation | Video signal outputs | DVI、CVBS、Y/C、R、G、B、V、H/CS |
| Classification of Medical equipment | Type of protection against electric shock | Class I |
| | Degree of protection against electric shock | BF type |
| | Level of explosion protection | Away from flammable gas |
| Power | Voltage | ~110V/220V AC |
| | Frequency | 50Hz/60Hz |
| | Input power | 60VA |
| Appearance | Ampere rating | 3.15 A |
| | Dimensions (W×H×L) | 390×115×420 mm |

AQL-100L/AQL-100 Light Source

| Illumination | Lamp | LED lamp | 175W Xenon lamp |
|--------------|-----------------------|--------------------------|--------------------------|
| Lighting | Emergency lamp | / | LED lamp |
| | Average life of bulb | ≥10000 hours | ≥500 hours |
| | Color temperature | 3000K~7000K | 3000K~7000K |
| | Brightness adjustment | Optical aperture control | Optical aperture control |
| Air pump | Level | High/Low | High/Low |
| Power | Voltage | ~110V/220V AC | ~110V/220V AC |
| | Frequency | 50Hz/60Hz | 50Hz/60Hz |

High Quality Images

AQ-100 system equipped with high resolution CCD, and introducing digital image processing technology. It can protect the endoscopic color and present the most high quality images maximumly.

(CBI) Compound Band Imaging

It can realize the optical dyeing to the blood vessels and superficial fiber structure by using 440nm & 540nm wavelength output. The technology can significantly improve the early cancer detection, and make it possible for early found early treatment. Currently, CBI has been widely applied to Barrett esophagus diagnosis, discovery of early gastric cancer and intestinal cancer NICE classification, early lung cancer and throat cancer.

Edge & Structure Enhancement

Two types of outline enhancement are available. Structure Enh for observation of larger mucosal structures with high contrast. Edge Enh for observation of smaller structures, such as capillaries.

Automatic Brightness Control

AQ System's unique new form of automatic brightness control. This new advanced system reduces light halation and provides images that are easier on the physician's eyes.

Scope ID Function

Convenient for endoscopy suite management. The scope ID displays on the monitor.

(HbE)Hemoglobin Enhancement

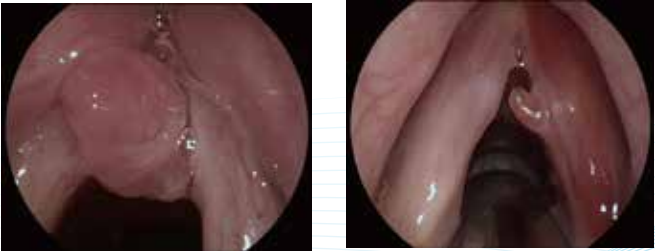
Detailed images of vein patterns are useful for advanced diagnosis of alimentary canals. The Hemoglobin Enhancement Function improves the projection and clarity of vein patterns. It applies to real-time and frozen images as well.

Electronic Magnification

Electronic magnification enlarges moving images at the touch of a button on the processor by 1.2x, 1.5x or 2x.

Remote Control

The ancillary equipment can be controlled from the front panel and endoscope's remote switches.
CBI (Compound band Imaging)
IRIS selection





VME-2800 Imaging Processor

(HbE) Hemoglobin Enhancement

Image processing function: HbE. Helps to better observe tiny capillaries.

Enhanced Image Quality

Advanced visualisation technology better supports diagnosis and effective treatment.

Freeze Function

This function helps physicians obtain a clear visual record of the procedure.

New Features

- Backlit front panel indicators and controls improve operability.
- Convenient endoscopy documentation management.
- Using USB, video and photo images can be recorded using a foot switch.

| | | |
|-------------|--------------------------|--|
| Observation | Video signal outputs | RGB, S_Video, Composite , DVI(Digital Visual Interface) |
| | Image enhancement | Increase the sharpness of endoscopic images. OFF, 1, 2 and 3 |
| | Gain control | OFF, 1, 2 and 3 |
| | Color tone adjustment | “R”、“B” adjustment: ±50 steps |
| | Brightness adjustment | “Y” adjustment: ±50 steps |
| | Freeze | Endoscopic images can be frozen |
| | IRIS | Average; Peak |
| Power | White balance adjustment | Press the white balance switch to do the white balance adjustment. |
| | Voltage | ~110V/220V AC |
| | Frequency | 50Hz/60Hz |

VME-2800 Series

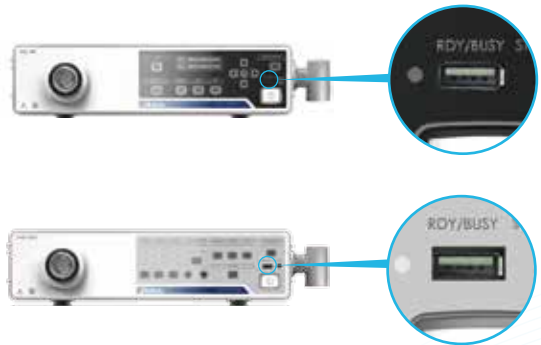
LLS-2800 / XLS-2800 Light Source

| | | | |
|--------------|-----------------------|--------------------------|---------------------------------------|
| Illumination | Lamp | LED lamp | 175W Xenon lamp |
| | Color temperature | 3000K~7000K | 3000K~7000K |
| Lighting | Average life of bulb | ≥10000 hours | ≥500 hours |
| | Brightness adjustment | Optical Aperture control | Optical Aperture control 12 scales |
| | Emergency lamp | / | LED lamp |
| | Air pressure | 30-80kPa | 30-80kPa |
| Air pump | Air flow | 4L/min-7L/min | 4L/min-7L/min |
| | Level | High / Low | High / Low |
| | | | |
| Power | Voltage | ~110V/220V AC | ~110V/220V AC |
| | Frequency | 50Hz/60Hz | 50Hz/60Hz |

Additional Features

■ USB Function(optional)

The USB interface can be used to store video and still images using U disk. A keyboard and display lamp etc. can also be connected.



■ White Balance Cap

Patent No. ZL 201420416665.6

Ergonomic rotating design.





Bronchoscope Series



AQ-100 system.



VME-2800 system.

Video Bronchoscope VBC-1T30/VBC-Q30

- Compatible with both AQ-100 and VME-2800 system.
- ▶ A new high-resolution CCD, 120° field of view, provides a wide range, clear, and bright image.
 - ▶ Minimum 4.9 mm slim insertion tube, providing an excellent insertion performance.
 - ▶ Cooperate with 2.0 mm instrument channel, which is compatible with most therapeutic accessories.

Portable Video Airway Endoscope MBC Series

All-in-one design integrating video endoscope, MP4, light source, battery and recording device in one unit.

- ▶ Portable recording: renewable SD-card supports for storing of still images and videos.
- ▶ Thin intubation: the smallest diameter of the insertion tube is only 4mm.
- ▶ Multi-functional design: equipped with working channel and support for suction, BAL, and instrument use.
- ▶ Visual confirmation: featuring a 3.5 inch monitor and long-life LED light source.
- ▶ Long-time working: rechargeable lithium-ion batteries continually work four hours.
- ▶ Widely used: applicable to Anesthesiology, Respiratory, ENT, ICU, Emergency Room, Wards, etc.



LG150-2 light source

Fiber Bronchoscope ABF Series

Compatible with LG150-2 light source.

- ▶ 3.5 mm insertion tube for the ABF-3, providing an excellent insertion performance.
- ▶ Cooperate with 2.2mm instrument channel for ABF-5, compatible with most of therapeutic accessories.
- ▶ The new image guide bundles provide high-definition images.

Bronchoscope Series



Flashlight

Portable Fiber Bronchoscope BBF Series

All-in-one design integrating fiber endoscope and flashlight in one unit.

- ▶ Portable design provides the most convenient and quick bronchoscopy.
- ▶ Equipped with portable LED flashlight, which can provide bright and high quality lighting .
- ▶ Waterproof design for the insertion tube, convenient for cleaning and disinfection.

Specifications

| | Model | Working length | Diameter of insertion tube | Depth of field | Diameter of instrument channel | View of field | Range of bending |
|---------------------------------|----------|----------------|----------------------------|----------------|--------------------------------|---------------|------------------|
| Video Bronchoscope | VBC-Q30 | 600mm | 4.9mm | 3-50mm | 2.0mm | 120° | U160°D130° |
| | VBC-1T30 | 600mm | 5.7mm | 3-50mm | 2.0mm | 120° | U160°D130° |
| Portable Video Airway Endoscope | MBC-4 | 600mm | 4.0mm | 3-50mm | N | 100° | U160°D130° |
| | MBC-5 | 600mm | 5.2mm | 3-50mm | 2.2mm | 100° | U160°D130° |
| | MBC-6 | 600mm | 5.8mm | 3-50mm | 2.6mm | 100° | U160°D130° |
| Fiber Bronchoscope | ABF-3 | 600mm | 3.5mm | 2-60mm | N | 120° | U160°D130° |
| | ABF-4 | 600mm | 4.0mm | 2-60mm | N | 120° | U160°D130° |
| | ABF-5 | 600mm | 4.8mm | 2-60mm | 2.2mm | 120° | U160°D130° |
| | ABF-6 | 600mm | 5.8mm | 2-60mm | 2.2mm | 120° | U160°D130° |
| Portable Fiber Bronchoscope | BBF-4 | 600mm | 4.0mm | 2-60mm | N | 120° | U160°D130° |
| | BBF-5 | 600mm | 4.8mm | 2-60mm | 2.2mm | 120° | U160°D130° |
| | BBF-6 | 600mm | 5.8mm | 2-60mm | 2.2mm | 120° | U160°D130° |